

Japanese cutting-edge medical technology

Japan Federation of Medical
Devices Associations (JFMDA)

Chairman

Koji Nakao

	Russia	Japan
Average life expectancy (yrs)	67.7	82.0
Infant mortality rate (/1,000)	11.3	6.9
Cause of death	1 Cardiac disease	Cancer
	2 Cancer	Cardiac disease
	3 Accidental death	Cerebrovascular disease
		Pneumonia

Cancer therapy without surgery

Proton Therapy Systems



Heavy ion radiotherapy

Treatment for: Brain tumor, liver cancer, prostate cancer, uterus cancer

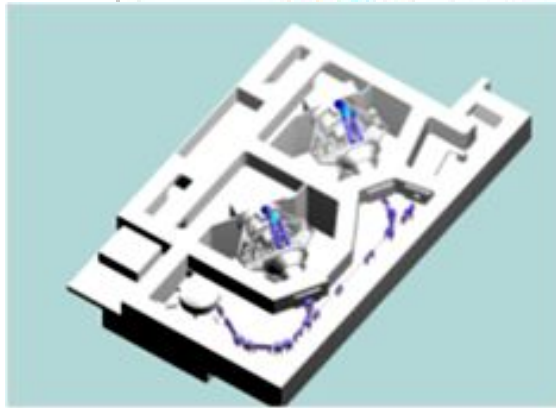


Photo : Sumitomo Heavy Industries, Ltd. Website

Non Invasive diagnostic imaging

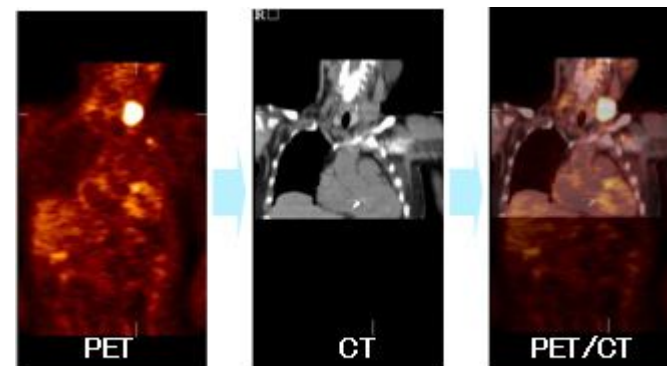
Early detection of cancer cells and vascular disease with high definition imaging
Better for patients due to less exposure to radiation

Multi-detector computed tomography



From the homepage of Toshiba Medical Systems

PET CT



肺がん術後(左肺切除)後のリンパ節転移

From the homepage of Shimadzu

Supporting Interventional procedures with the use of images of blood vessels

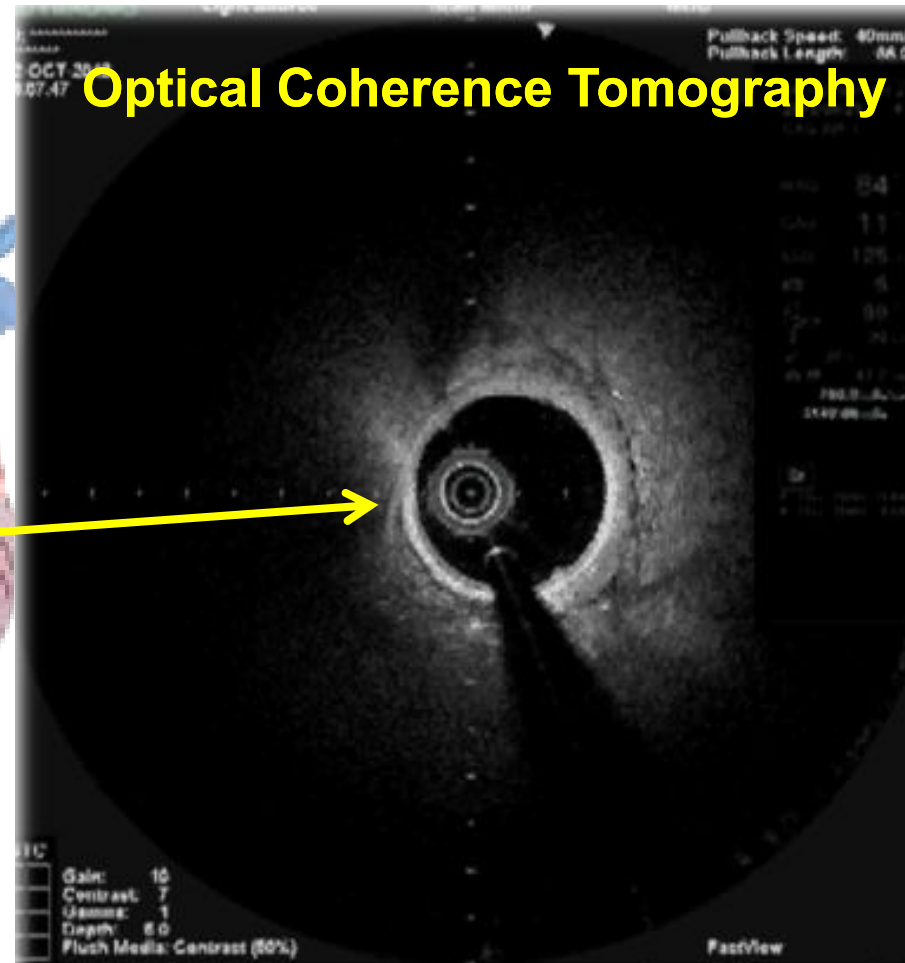
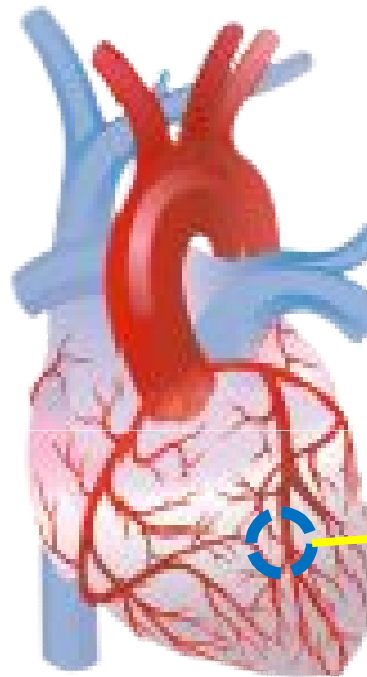


Image of a longitudinal section of the blood vessel



Imaging system

Interventional Cardiology

Percutaneous coronary intervention

■ PTCA



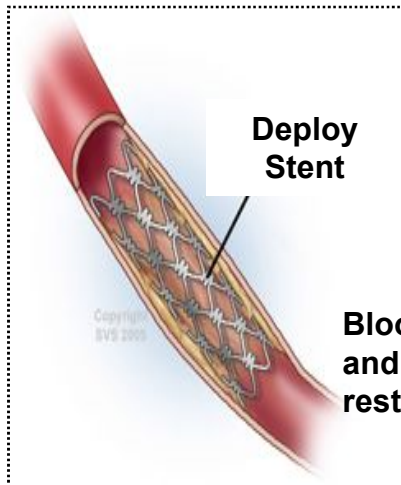
Dilation of blood vessels with a balloon

■ Drug Eluting Stents



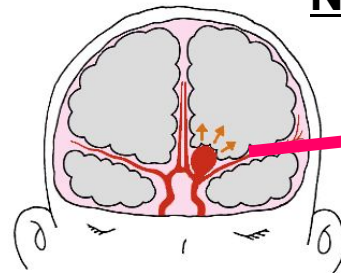
Stents coated with a drug to block cell proliferation

Peripheral Vascular stents

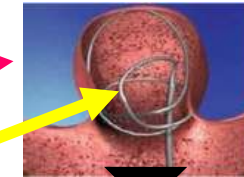


Blood flow resumes and prevents restenosis

Neurovascular embolization coils



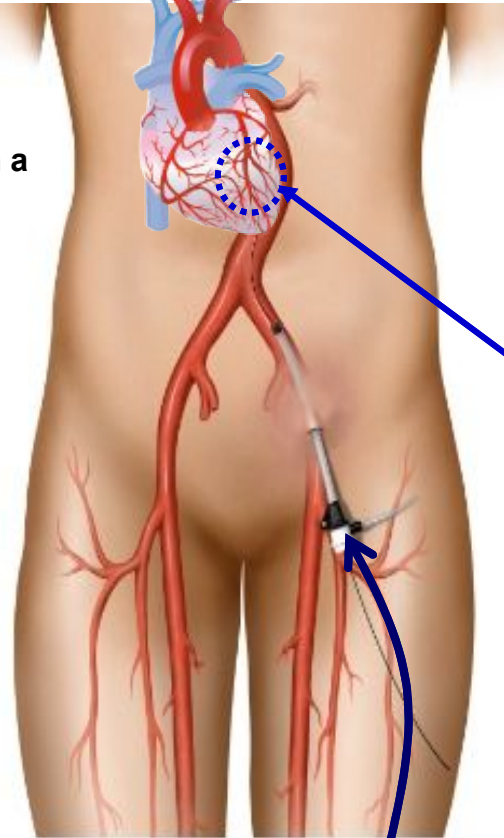
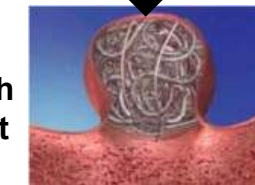
Cerebral aneurysm



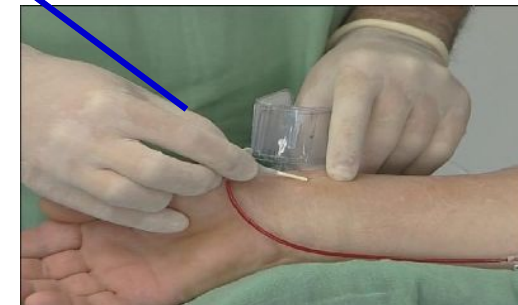
Platinum coil



Filling the aneurysm with coil to prevent rupture.



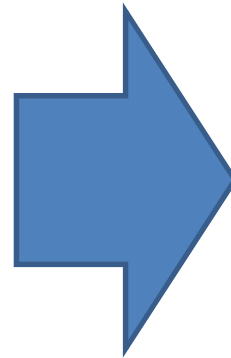
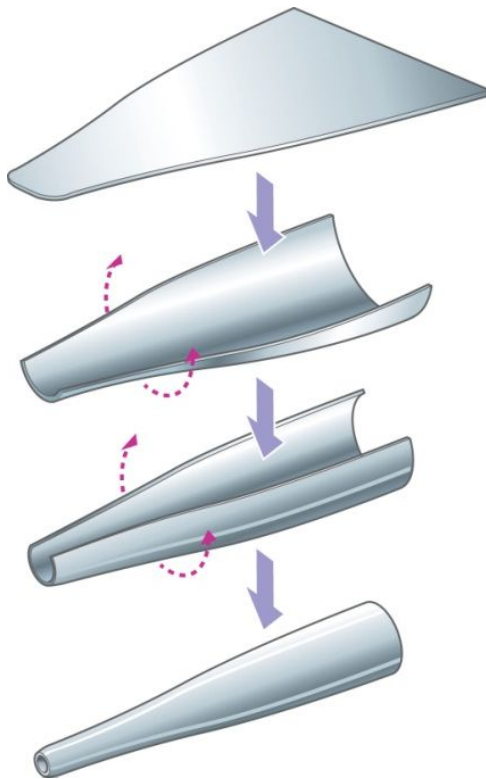
Insertion of catheters via the femoral artery



Insertion of catheters via the radial artery

Less pain for insulin injections with the world's thinnest needle

Production process



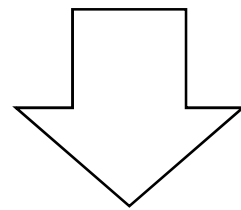
Tip Diameter
 $\Phi 0.18\text{mm}$ 34G



High accuracy diagnosis

Non-invasive therapy

Less-invasive treatment
(Interventional Cardiology)



To contribute to medical care and
the people of Russia