

**Yaroslavl Oblast Government**

**Investment opportunities in  
Yaroslavl Oblast**



2012

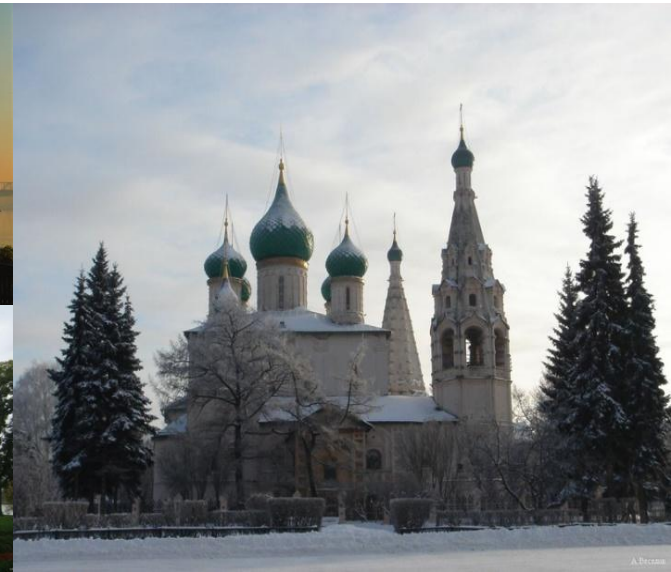


Government of  
Yaroslavl Region

# Yaroslavl Oblast

**Golden Ring of Russia** is the name to the necklace of ancient Russian cities north-east of Moscow. Yaroslavl and 4 other cities of oblast are called open-air museums. They are a traditional Russian architecture ensemble of the 12-18 centuries.

**Yaroslavl was founded in 1010** by Prince Yaroslav the Wise at the confluence of two rivers - the Volga and Kotorosl.



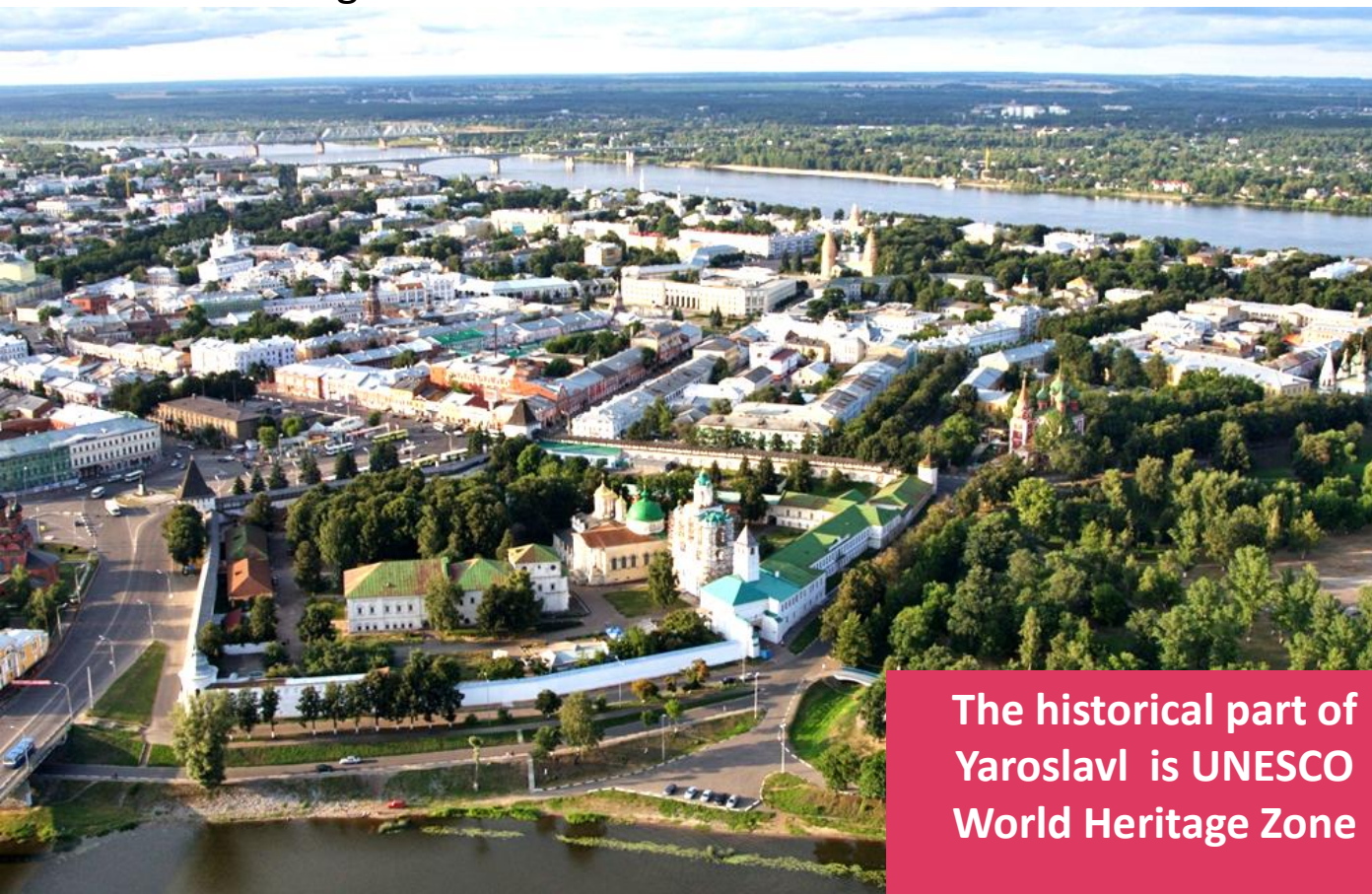


Government of  
Yaroslavl Region

# Yaroslavl City Location

**Yaroslavl is the major economic center to the north-east of Moscow**

Yaroslavl is the most quickly developing administrative and business center on the Up-Stream of Volga-river



- More than 4 500 industrial companies
- 45% of active population have higher and professional secondary education

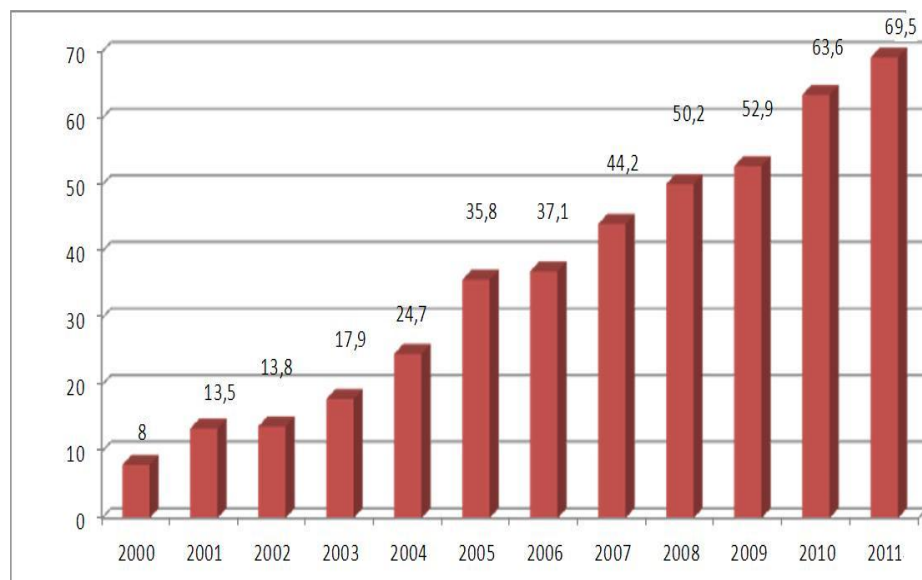


The historical part of  
Yaroslavl is UNESCO  
World Heritage Zone



**Investment policy in the region favors successful development of new businesses**

**Investments into fixed capital, MIO rubles**



According to various experts, Yaroslavl oblast in 2011 is featured in Top 10 most dynamic regions of the country by quality of financial management and ability to attract investors.

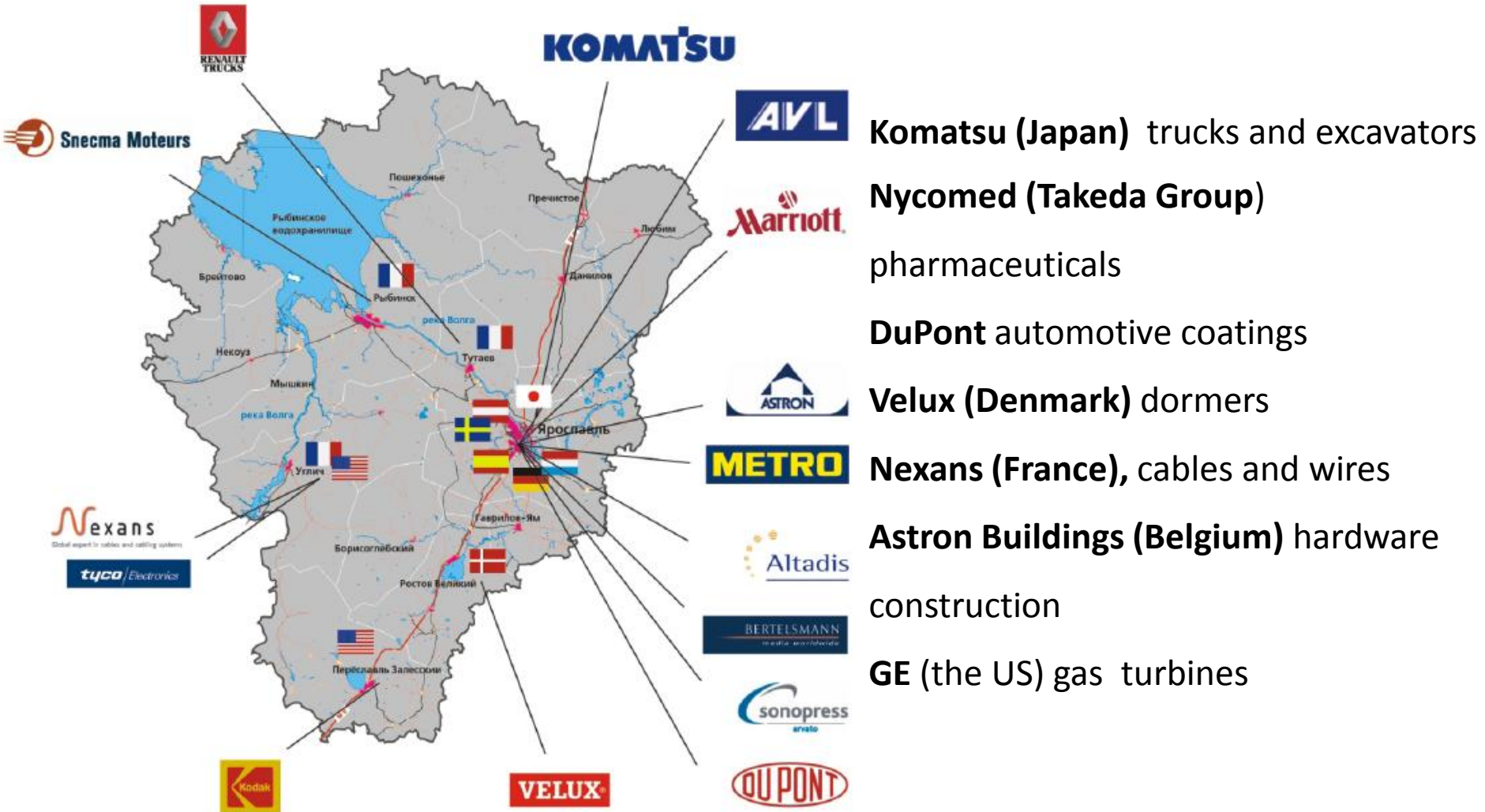


- Regional investment strategy approved by the Governor;
- Investment memorandum approved by the Governor;
- Approval of the yearly plan to develop infrastructure needed for investors;
- Local laws to protect investor rights and support investor activities;
- Adoption of the regulation to assess impact of the local laws on the entrepreneurs activities;
- Council to improve investment climate;
- Specialized organization to attract investment;
- Infrastructure – industrial parks;
- professional trainings to meet regional strategy needs and investors requirements;
- Government people assessment trainings to meet investor needs;
- Independent people present in the energy commission;
- Direct communication channel for investors;
- Specialized 2 language internet site;
- Yearly Address of the Governor regarding investment climate;
- One stop shop to help investment projects.



Government of  
Yaroslavl Region

# FDI in Yaroslavl oblast





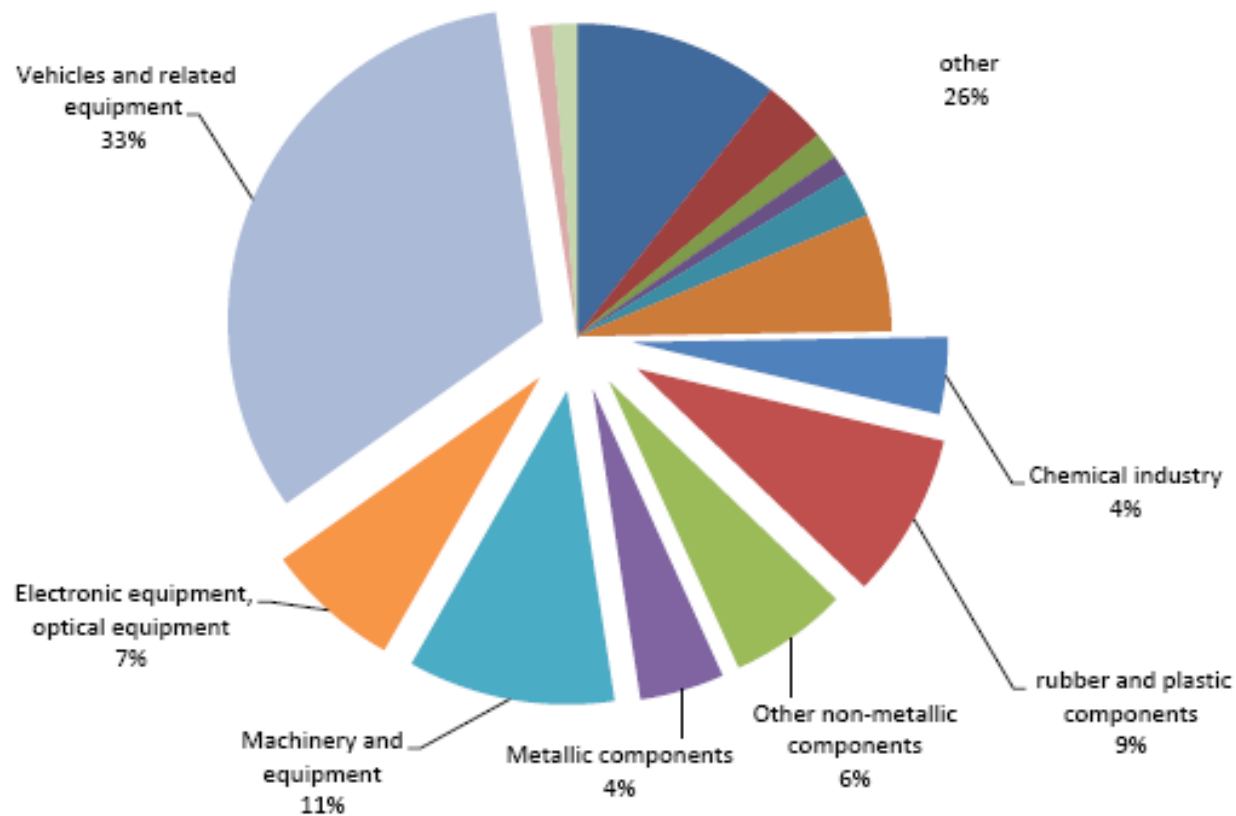
# Factors to select the region – investor expectations





- Majority of specialists are engaged in production

The number of substituted workplaces in organizations by type of production, %



– The economically active population–700,6 thou.

- Urban - 1045,5 thou.

- Rural - 227,0 thou.





## The training system for specialists

### Leading State universities with focus in engineering:

- Yaroslavl Technical University
- Aviation Technological Academy
- Yaroslavl State University
- etc.

### Spheres of professional education:

- **Automotive Technology**
- **Metallurgy**
- **Automatic control and Management**
- **Engines designing and building**
- **Engineers of electrical power systems**
- **Electrical , radio engineering**
- **Chemical engineering**

- **58 000 students**
- **38 institutions of higher education**
- **61 institutions of higher and secondary professional education**





Government of  
Yaroslavl Region

# Transport infrastructure

**Federal Highway M8  
«Moscow - Arkhangelsk»**

**Railway:  
Northern Railway, the Trans-  
Siberian Railway, roundabout  
route Samara - St Petersburg -  
Karelia**

**International Passenger and  
Cargo Airport “Tunoshna” - 20  
km from Yaroslavl, 5 km from  
the railway**

**Passenger and cargo ports on  
the Volga River**





Government of  
Yaroslavl Region

# Infrastructural capacity

## It's easy to Build

- roads availability
- accessible communication
- developed power system
- availability of modern industries, materials and high-making the construction industry

The first European-quality plant in Russia by Lindab-ASTRON



Plant Astron buildings, 14 000 sq.m.



Komatsu plant in Yaroslavl is designed and built by ASTRON Buildings, (Industrial Park 'Novoselki')



Plant Komatsu, 50 000 sq.m.



Government of  
Yaroslavl Region

# Industrial sites of the region

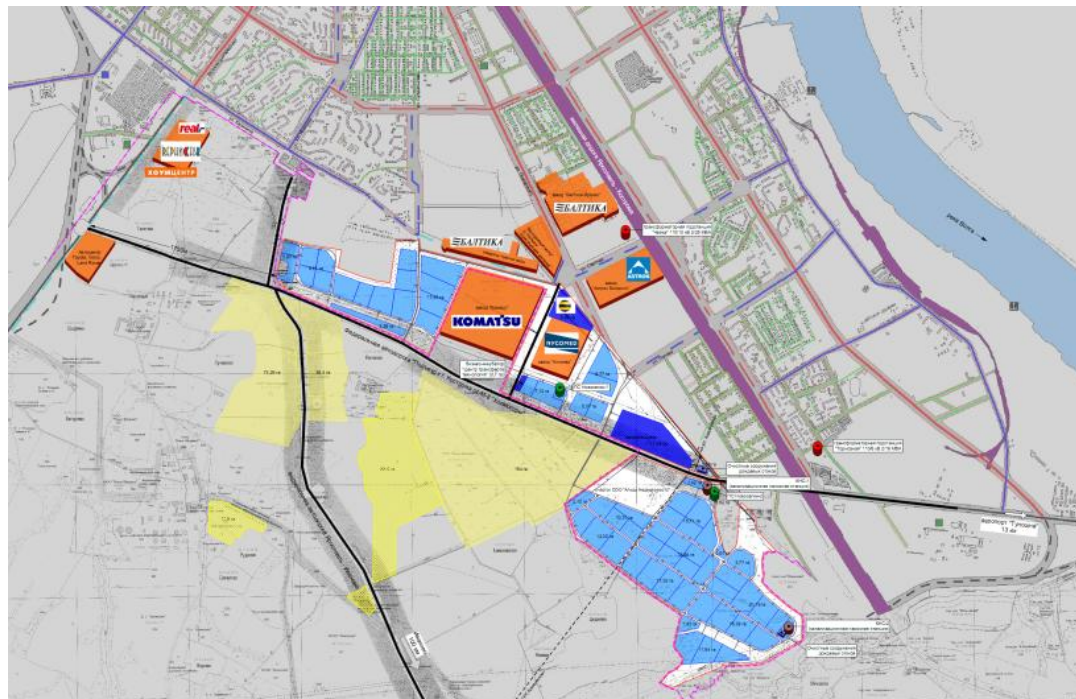




# Industrial sites of the region: ready for investors

- Square – more than 400 hectares
- Sanitary zones up to 100 meters available for the enterprise location
- Providing of infrastructure on the boundary of sites
- Energy supply from 4x40 MWt substation
- Gas supply from new gas control points (GCP) “Ananyevo”
- Potential producers can be located next to existing residents (Komatsu, Astron Buildings, Nycomed, Baltic)

## “Novoselki” Industrial site, the participant of the Assotiation of Industrial parks of Russia



- Square – 200 hectares
- Providing of infrastructure on the boundary of sites
- Energy supply from “Nero” substation
- Gas supply

## “Rostovskaya” Industrial site

«РОСТОВСКАЯ»  
Перспективная Инвестиционная Площадка

Графические материалы по разработке  
концепции земельного участка

- Пром. Участок КИ А
- Пром. Участок КИ Б
- Резерв
- Шоссейная Дорога
- Железная Дорога

Для Координации  
ООО «Дреес и Зоммер»  
Проект Менеджмент и Бизнес-Технологии  
г. Москва 21.08.2012

М 1:10,000 (на формате А3)  
Титул





Government of  
Yaroslavl Region

## Strategy: Key Sectors & Clusters

- Pharmaceuticals, medical equipment;
- Automotive components;
- Tourism;
- Energy machinery and turbines;
- Distribution and Logistics;
- IT.



Government of  
Yaroslavl Region

# Pharmaceuticals

## Pharma 2020 Strategy Follow-up in Yaroslavl Oblast

### Localization



Start-up of the plants  
«R-Pharm» and «Nycomed»



### Import substitution



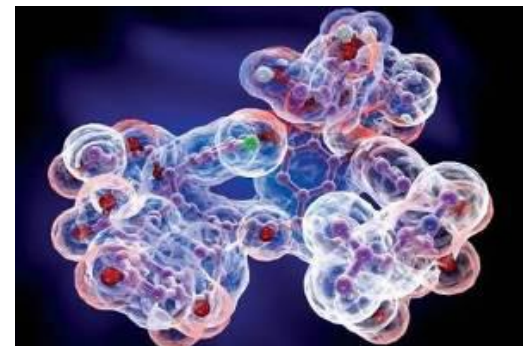
Joint project of High Tech Center  
CHEMRAR and «R-Pharm» in  
pharmaceutical substances  
production  
Output of generic pharmaceuticals  
at the «R-Pharm» plant



### Export orientation



LLC «Intellectual dialog»  
R&D of the innovative and  
new competitive medicine





Government of  
Yaroslavl Region

# Pharmaceuticals



- Total volume of investments into GMP pharma projects in the region - over 1000 MIO USD



## GMP Multilevel Specialists Training

- Postgraduate education and conversion training,
- Specialized secondary education,
- R & D,
- Internship at hi-tech enterprises,
- Cooperation with the leading pharmaceutical companies







Government of  
Yaroslavl Region

# Autocomponents



**ENGINE UNITS and  
COMPONENTS**



**TYRES, MECHANICAL  
RUBBER GOODS**



**OEM COATINGS**



**AGGREGATES**



**GEAR, CABLES, ...**

**Avtodiesel, Tutaev Motor  
Plant, YZTA-YZDA (fuel-  
injection system),  
Agro-service (tooling),  
Gasmotor**

Engines, gearboxes, fuel  
systems, pump elements,  
microprocessor engine control  
systems, ...

**Yaroslavl tyre plant,  
Yaroslavl Plant RTI**

Tires, gaskets,  
sealing rings, cuffs,  
barrels, cases, caps, ...

**DuPont Russian  
Coatings**

Refinish and OEM  
Coatings, Clear coats,  
Primers, CED + Technical  
Support

**Savell,  
Multitruck**

Assembly units, bodies,  
tanks, vans, ...

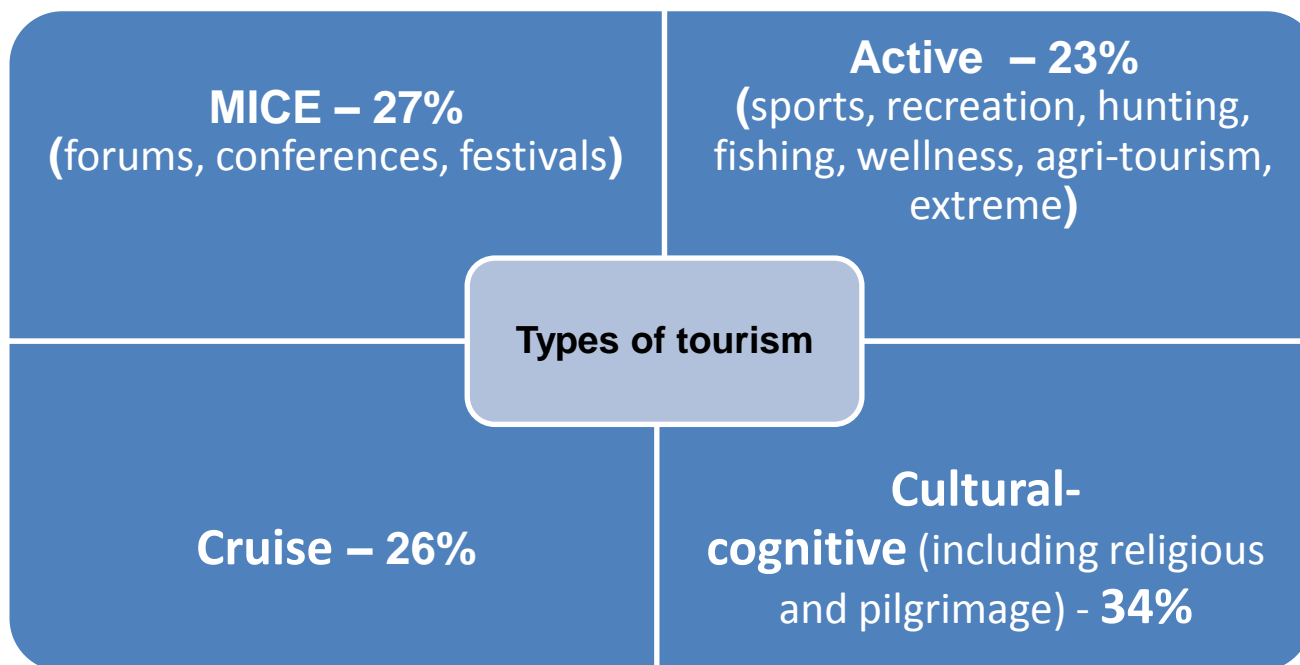
**TIIR, Fritex, Markon,  
Pragmatik-PK,  
RybinskAutoCable**

Sealings, covers, brake shoes,  
pump elements, cables

**Companies in the region deliver its products to the largest production line of Russian and foreign automakers**



Yaroslavl Region is in the oldest tourist route "Golden Ring of Russia"



5000 monuments of history, culture and natural artifacts

250 different museums

261 tourist enterprises

2011 - 1.765 million tourists passed: 1 500 thousand Russians 265 thousand - foreigners (mostly - USA 27% , France 24% , Germany 21%)



## Tax incentives for investors

- **Duration: from 7 years**
- **Full exemption from property tax (rate - 0%)**
- **Reducing income tax rates by 4,5% (up 15.5%)**
- **Full exemption from vehicle tax (rate - 0%)**
- **Tax relief on land tax**
- **Perhaps the provision of subsidies from the budget to compensate for the costs of infrastructure, as part of an investment agreement**

## Support and maintenance projects

- **Selection of sites for investors;**
- **Support for infrastructure issues;**
- **Participation in negotiations with the infrastructure companies, federal and local authorities;**
- **Faster receipt of necessary approvals and permits;**
- **Assistance in registering a local company of the investor;**
- **Assistance in training;**

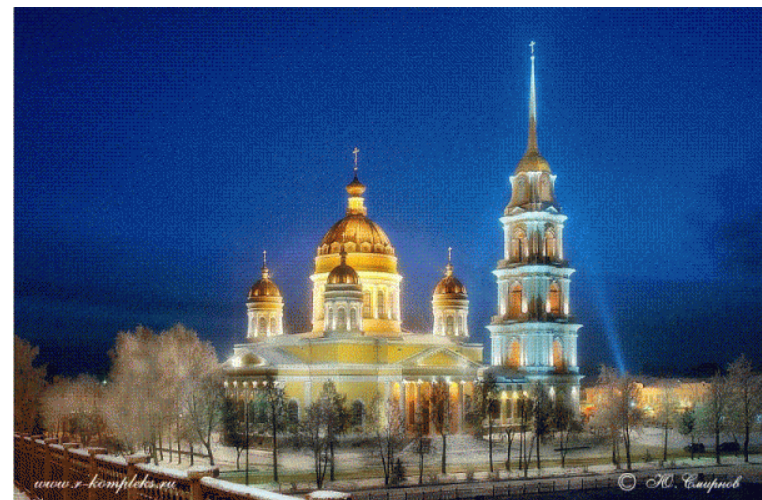


Government of  
Yaroslavl Region

## Yaroslavl Oblast Offers



- a Wonderful place to live and enjoy life
- HR with higher and basic professional education
- highways and roads, railway, airport, two river ports.
- widely known neighbors
- developed legislation
- reduced administrative barriers.





[www.yarregion.ru](http://www.yarregion.ru)

# Thank You

## Contacts

- ✓ **Director of Department of Economic Development – Alexander Shutov**  
Tel: +7 (4852) 40-19-03, e-mail: [a.shutov@region.adm.yar.ru](mailto:a.shutov@region.adm.yar.ru)
  
- ✓ **Department of Economic Development**  
Tel: +7 (4852) 40-19-03 e-mail: [der@region.adm.yar.ru](mailto:der@region.adm.yar.ru)  
Fax: +7 (4852) 40-01-46