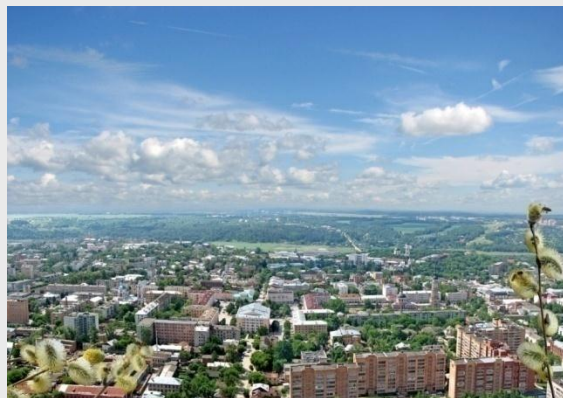




PLANS FOR PHARMACEUTICAL CLUSTER DEVELOPMENT IN KALUGA REGION



Anatoly ARTAMONOV
The Governor of Kaluga Region

KALUGA REGION ON THE MAP OF EUROPE



Total area

29 900 km²

Population

1.01 mln. people

Economically active population

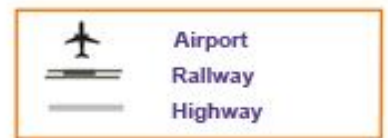
507,1 thous. people

Distance from Moscow
to Kaluga region

70 km.

Major cities

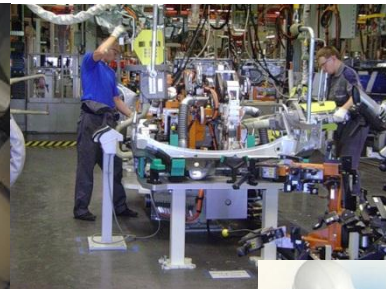
Kaluga, Obninsk



KALUGA REGION

- ✓ 2 HOURS FROM MOSCOW
- ✓ HIGHLY-SKILLED WORKFORCE
- ✓ 20 MILLION PEOPLE LIVE WITHIN A 150 KM RADIUS
- ✓ OUTSTANDING LOGISTICS

OUR RESOURCES: IDEAS and CREATIVITY!



ECONOMIC LEADERSHIP: AT THE TOP!



#1 Business-friendly region in Russia

*“The model of Kaluga Region aptly demonstrates how we can **create new industrial centers** – **practically from square one** – via the active involvement of cutting-edge technology...”*

Vladimir Putin, Prime Minister of Russia

3.7 bln. \$

(2006 -1H 2010)

Total foreign investments
in fixed assets

6.5 bln. \$

(2006 - 1H 2010)

Total investments in fixed assets

206%

Actual GRP
growth since
2003

20

Opening of foreign
enterprises
during 2010

A+(rus)

National long-term
rating
(FitchRatings)

#1 in Russia

(1Q 2010)

Foreign direct
investment (FDI), per
capita

#1 in Russia

Growth rate of
industrial
production

«Russia is the strategic market for Mitsubishi Motors for the next years. The project in Kaluga will be a new stage for our intermediate and long-term development in Russia. We will assist development of autoindustry in Russian market.»

Mitsubishi Motors Corporation , President Takashi Nishioka

WHAT'S DONE FOR IT?



We offer clear products for the investors

We have created a system of development institutions

We have developed a package of financial efforts

We have already realized the package of investment projects

We have formed investment culture

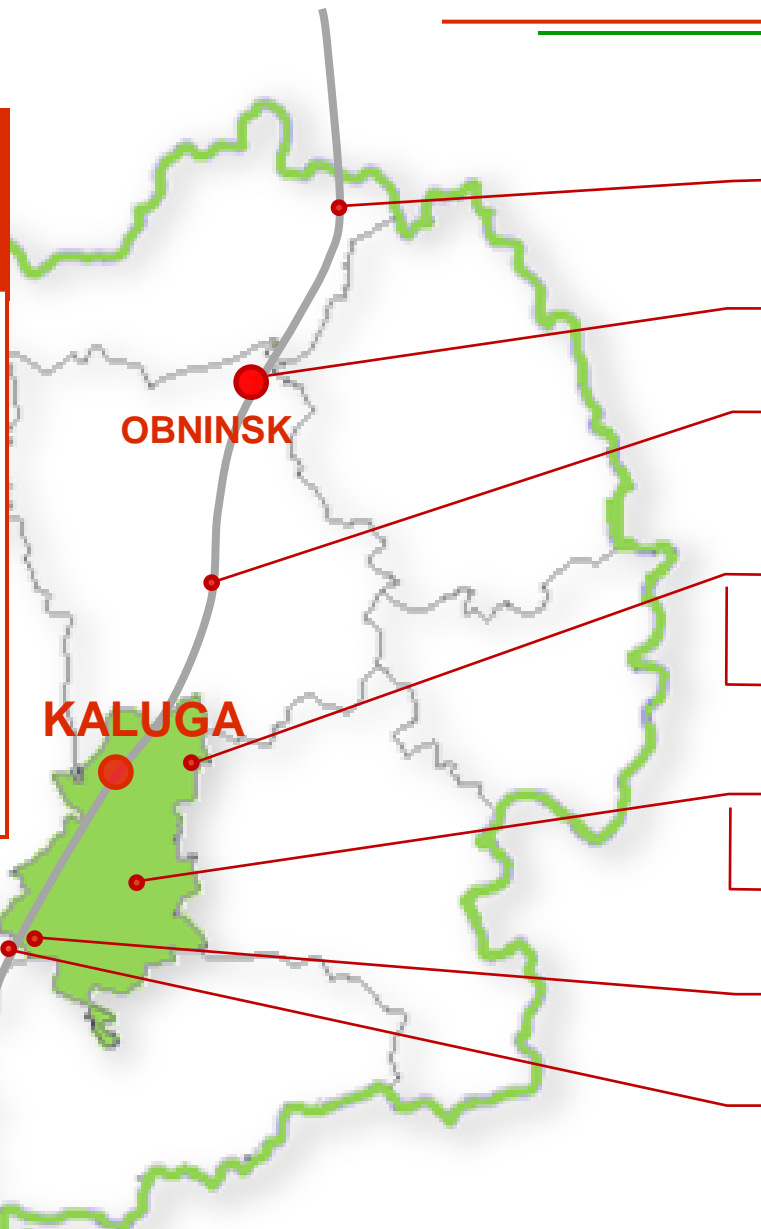
INDUSTRIAL PARKS: A BUSINESS-FRIENDLY PRODUCT



Total area of industrial parks: **2.7thous. Ha**

Non occupied - **50%**

- Ready-made engineering infrastructure
- Easy logistic access
- Land plots: rent or buy
- A-class production facilities for the long-term rent



VORSINO

L'ORÉAL KT&G



OBNINSK

NEARMEDIC

RUUKKI



Hemofarm

DETCINO

LEMKEN

EKONIVA
ЭКОНИВА



Big Dutchman



GRIMME

GRABTSEVO



MAGNA



A-PARK



BERLIN-CHEMIE
MENARINI

KALUGA-YUG



B-PARK

TAIKI-SHA LTD.

RÜCKER

БЕЦЕМА

SIEMENS
SCHERDEL

ROSLA



LEMMINKAINEN

private IP



RANI PLAST

VISION AND STRATEGY: CLUSTER POLICY



AUTOMOTIVE CLUSTER



BIOTECH- PHARMACEUTICAL CLUSTER



LOGISTICS AND TRANSPORTATION CLUSTER



- ✓ From reindustrialization to a knowledge-based economy
- ✓ From concentrating assets to drawing expertise
- ✓ From industrial parks to territorial clusters
- ✓ From mass-production to innovative products

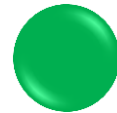
OBNINSK – FIRST SCIENCE CITY OF RUSSIA



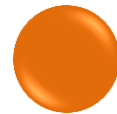
Tech park «Obninsk»



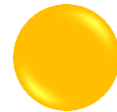
Nuclear medicine's center



Wide educational and scientific network



Qualified labor force



Well developed innovative infrastructure



Wide palette of projects (from research and development to manufacture), more than 40 enterprises of pharmaceutical branch



«Berlin-Chemie-Menarini»
«Novo Nordisk»
«Niarmedik Plus»



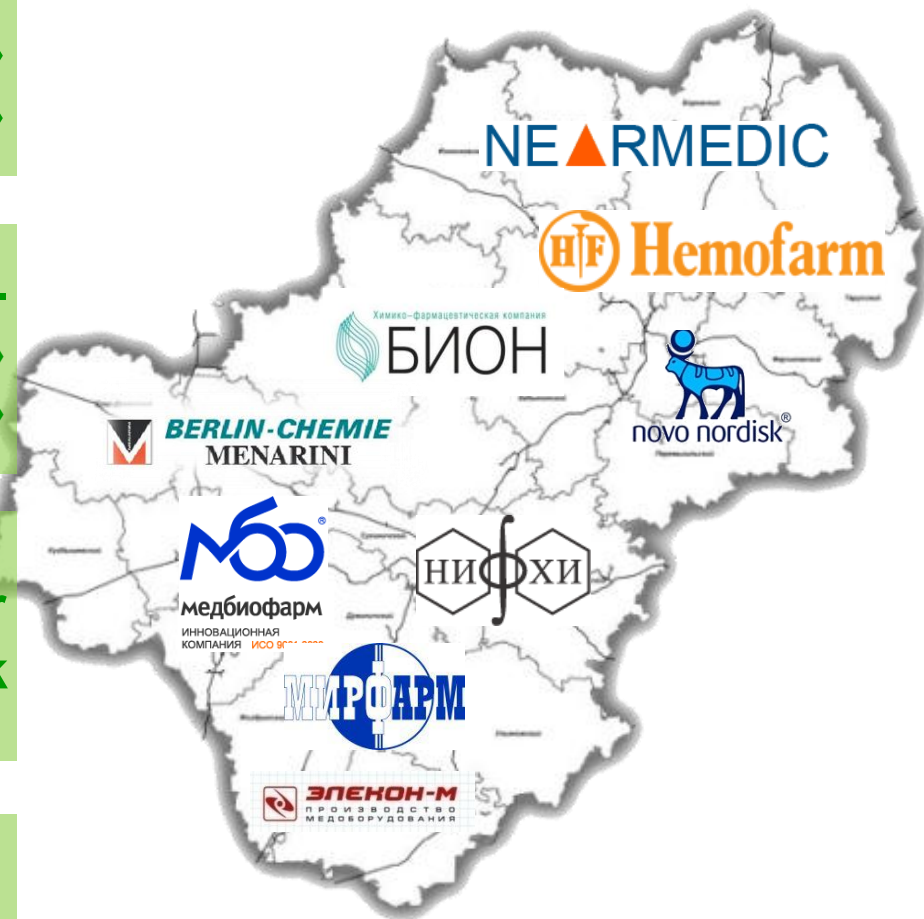
Russian Venture Company -
«Kardiomarker»
«OnkoMaks»



The center of nuclear
medicine in Obninsk



The educational center on
professional training for
pharmaceutical industry



TRAINING CENTER FOR PHARMACEUTICAL INDUSTRY



training of personnel for
pharmaceutical production

educational programs in accordance
with interests of manufacturers

technical and educational basis
of the international level

personnel «turnkey» -
regional personnel center

cooperation with foreign
training centers

Education branches:

- ✓ training and retraining adults without specialized education
- ✓ practical training for students of specialized departments of medical college
- ✓ advanced training for specialists with experience



THANK YOU FOR ATTENTION!



PLANS FOR PHARMACEUTICAL CLUSTER DEVELOPMENT IN KALUGA REGION