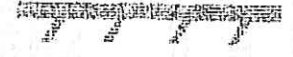


# АВТОДОР



22





## TENDERS:



**1. TOLL ROAD BUILDING TENDERS BLANKETED INTO THE STATE COMPANY'S PROGRAM**



**2. PROSPECTIVE TENDERS**



**3. STATE COMPANY'S INFRASTRUCTURE TENDERS, AIMED AT ACQUISITION OF EXTRA INCOME OF PRINCIPAL ACTIVITY**



# АВТОДОР

## The State Company's long term activity program

According to the approved Program investments of State Company for 2010 – 2015 years make up **1,346 trillion rubles. 879 billion rubles of it** (65% of investments) are subventions of federal budget, and **468 billion rubles** (35% of investments) – obtained non-budget funds :

	2010	2011	2012	2013	2014	2015	TOTAL
<b>AMOUNT OF FINANCING, thousands of rubles</b>	42 808	86 923	167 675	271 741	351 467	426 383	<b>1 346 997</b>
Including federal budget	39 808	71 923	137 675	201 741	201 467	226 383	878 997
Non-budget funds	3 000	15 000	30 000	70 000	150 000	200 000	468 000

**АВТОДОР**

## The State Company's long term activity program

The Program plan provides in 2010 – 2015 years realization of following projects:

	Object name	Realization date	Object extension	Quantity and extension of toll sections	
1	Reconstruction of federal highway M-4 «Don»	2010-2015	1517 KM	11	637 KM
2	Reconstruction of federal highway M-1 «Belarus»	2010-2018	449 KM	2	200 KM
3	Building of express-road Moscow – St. Petersburg (pre-eminently building)	2010-2018	626 KM	9	626 KM
4	Building of Central ring-road (pre-eminently building)	2010-2018	313,8 KM	6	313,8 KM
5	Building of New enter on Moscow ring-road from federal highway M-7 «Volga» (Noginsk bypass) in Moscow Region (head section of new express-road Moscow – Kazan – Chelyabinsk)	2012-2016	44 KM	1	44 KM

# АВТОДОР

## The State Company's long term activity program

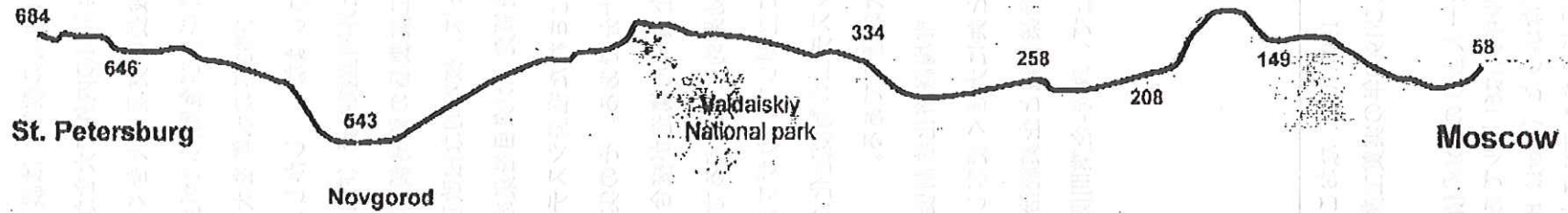
	Object name	Realization date	Object extension	Quantity and extension of toll sections	
7	Reconstruction of federal highway M-3 «Ukraina»	2011-2018	470 KM	4	273,6 KM
8	Building of toll road Krasnodar – Abinsk - Kabardinka	2013-2018	147,4 KM	1	147,4 KM
9	Building of highway from Kazan through Orenburg and at frontier with Kazakhstan	2011-2020	825 KM		825 KM
10	Building with following toll operation Vologda bypass	2013-2015	50 KM	1	50 KM
11	Building of Circular route in Primorskiy recreation area in Kaliningrad Region	2011-2013	24 KM	1	24 KM

- Roads made according to International Transport Passage program Europe – West China

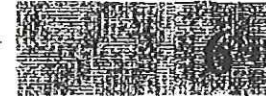


# АВТОДОР

## Building of expressway Moscow – St. Petersburg km 58 – km 684



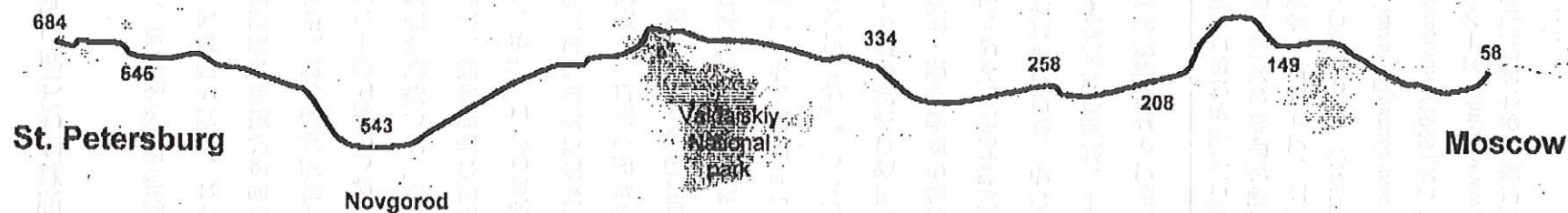
	Section extension, km	Price of pre-eminently building, billion rubles in 2009 year prices	Building terms
58-149	91	81,2	2010-2015
149-208	Tver bypass 59	43,8	2012-2017
208-258	50	46,0	2013-2017
258-334	Vyshniy Volochok bypass 76	54,5	2010-2014
334-543	209	141,4	2013-2018
543-646	103	122,6	2013-2017
646-684	Ring-road – Tosno 38	44,6	2010-2014
	<b>626</b>	<b>534,1</b>	



# АВТОДОР



## Building of expressway Moscow – St. Petersburg km 58 – km 684



Investment resources necessity (2010-2015):

- **140 billion rubles** (3,4 billion euro)

Investment resources necessity (2010-2018):

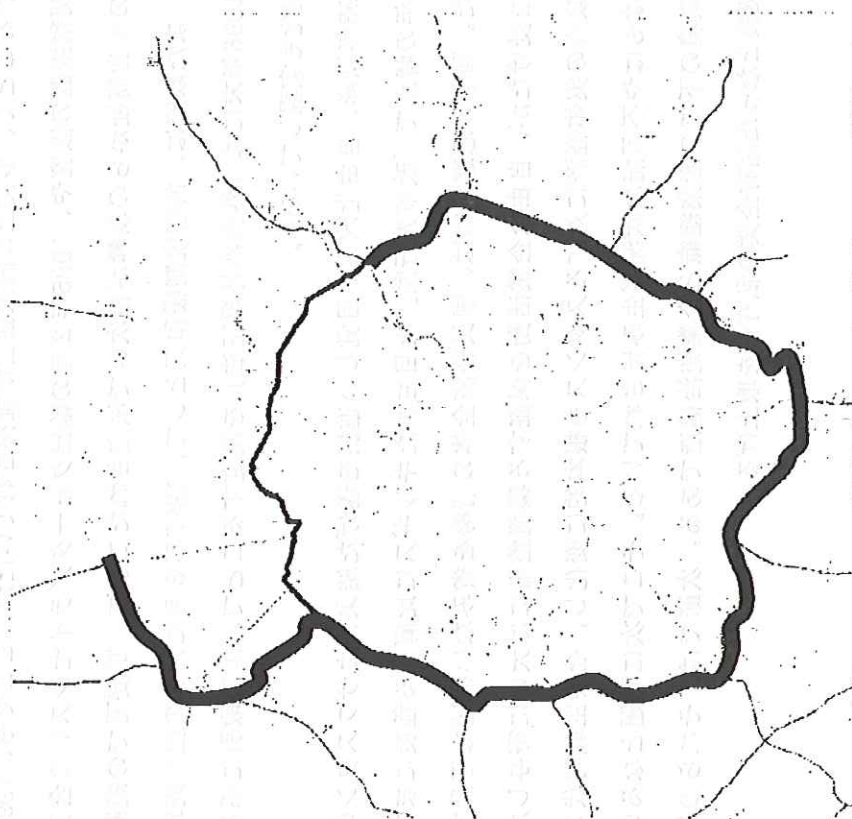
- **275 billion rubles** (6,7 billion euro)



# АВТОДОР



## Building of Central ring-road in Moscow Region



Total extension of Central ring-road – 520 km

The plan is to start 3 sections of road 314 km length before 2015:

### Section №3 from Moscow – St. Petersburg highway to M-7 Moscow – Nizhniy Novgorod

- extension – 105 km
- cost of pre-eminently construction – 91,3 billion rubles
- Building terms – 2011-2015

### Section №4 from M-7 Moscow – Nizhniy Novgorod to M-4 «Don»

- extension – 96 км
- cost of pre-eminently construction – 92,8 млрд.рублей
- Building terms- 2011-2016

### Section №1 from M-4 «Don» to M-1 Moscow - Minsk

- extension – 113 км
- cost of pre-eminently construction– 109,5 млрд.рублей
- Building terms– 2013-2018





# АВТОДОР

## Toll sections constructing on M – 4 “Don” highway (2010-2011 гг.)

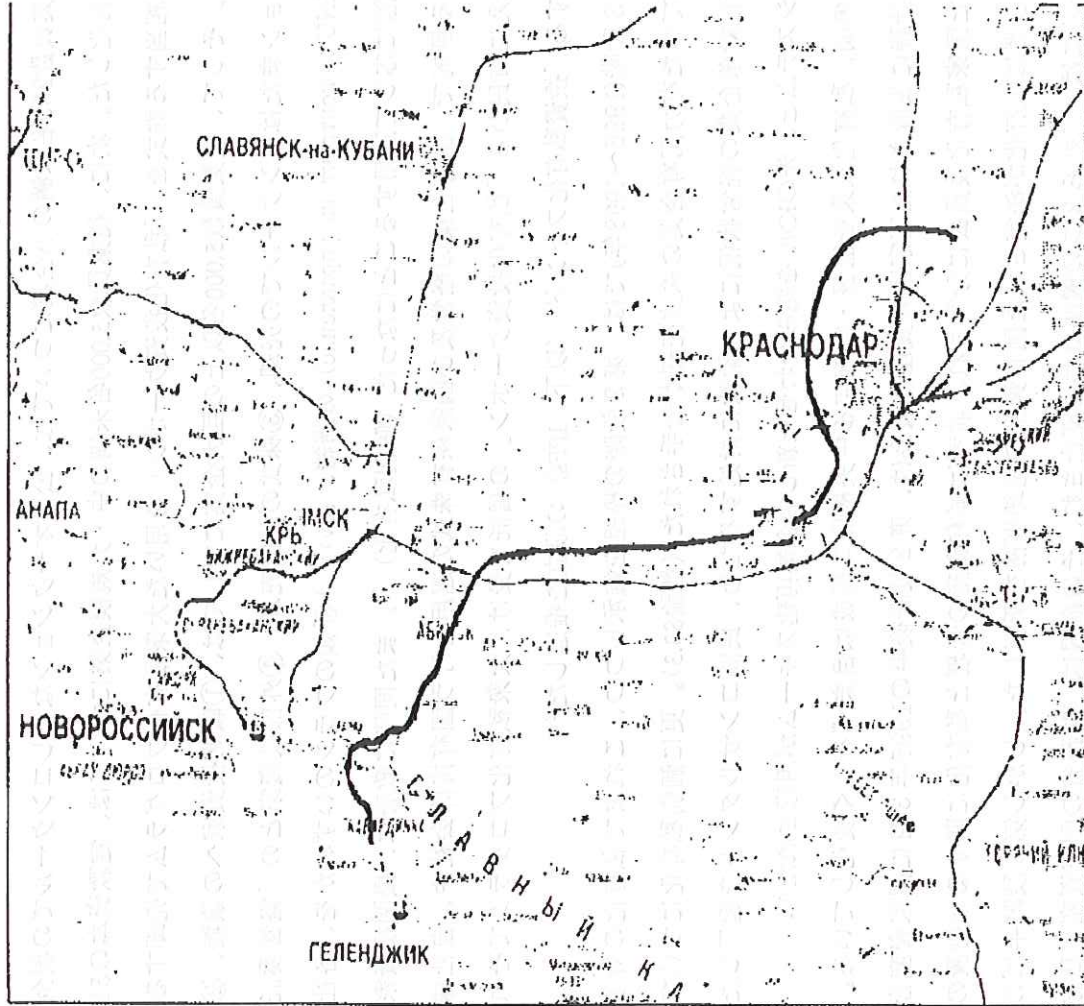
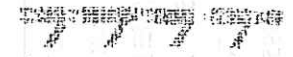
According to the long term activity Program it is planned to set up 19 toll sections **818 km** length (50% of road extension):

Year	Introducing toll sections	Range of Introduction		Total extension of toll sections km
		Quantity	km	
<b>2010</b>	km 225 – km 260 (Bogoroditsk bypass), km 287 – km 321 (Efremov bypass), km 414 – km 464	3	108	<b>108</b>
<b>2011</b>	km 21 – km 71 (Moscow ring-road - Kashira I-II), km 117 – km 211, km 55 – km 414 (Elets bypass), km 1119 – km 1195	5	279	<b>387</b>
<b>2012</b>	km 71 – km 117 (Moscow ring-road - Kashira III), km 260 – km 287, km 330 – km 355 (Yarkino bypass), km 492 – km 502 (Voronezh bypass I), km 544 – km 633	5	197	<b>584</b>
<b>2013</b>	km 948 – km 1024, km 1091- km 1119, km 464 – km 492*, km 211- km 225	3	146	<b>730</b>
<b>2014</b>	km 502 – km 517 (Voronezh bypass II), km 633 – km 658 (Losevo bypass), km 658 – km 700 (Pavlovsk bypass)	3	88	<b>818</b>



# KRASNODAR – ABINSK – KABARDINKA TOLL ROAD BUILDING TENDER

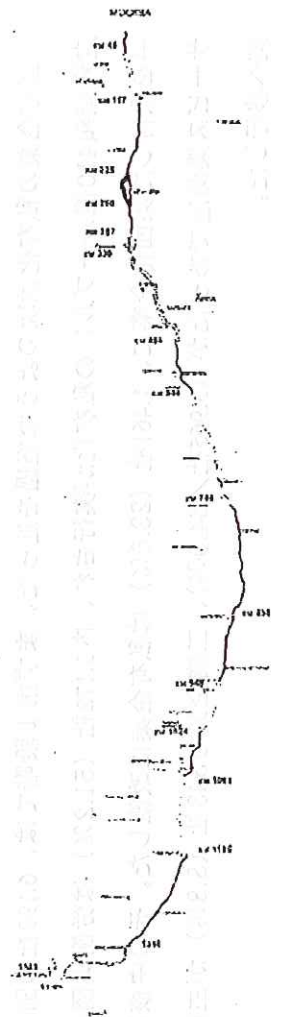
## АВТОДОР



- Extension: 147,42 km
- Number of traffic lanes: 4
- Road category : 1Б
- Calculated rate of movement:  
120 km/h; 80 km/h (mountain areas)
- Cost: 117 billion rubles



# АВТОДОР



## Toll sections constructing on M – 4 “Don” highway

Investment resources necessity (2010-2015):

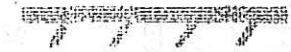
- **90 billion rubles** (2,2 billion euro)

Investment resources necessity (2010-2018):

- **115 billion rubles** (2,8 billion USD)



# АВТОДОР



## Toll sections constructing on M-1 «Belarus» highway



	Section extension, km	Constructing cost million rubles in 2009 prices	Date of putting into toll operation
New enter on Moscow ring-road (Odintsovo bypass) Moscow ring-road - km 33	18,5	21 500 (Investment fund)	2012
km 33 - km 84 Moscow Region	51	25 900	2014
km 231- km 380 Smolensk Region	149	31 300	2015



# АВТОДОР

## International Transport Passage program Europe – West China

- **Building with following toll operation Vologda bypass**
- Extension: **14 km**
- Number of traffic lanes : **4/6**
- Road category : **1E**
- Calculated rate of movement : **120 km/h**
- Cost: **8,4 billion rubles**
  
- **Kazan – Orenburg – Kazakhstan board road building tender, including Shali – Almetievsk – Bavly section in Tatarstan.**
- Extension: **313 km**
- Shali – Sochji Gory – **54 km**;
- Bridge across river Kama – **14 km**;
- Alekseevskoe – Almetievsk section – **145 km**;
- Almetievsk – M5 (Bavly) section – **100 km**
- Number of traffic lanes : **4/6**
- Road category : **1A**
- Calculated rate of movement : **120 km/h ; 80 km/h** (mountain areas)
- Cost: **75 billion rubles**
  
- **Europe – West China Transport Passage project**



# АВТОДОР

