

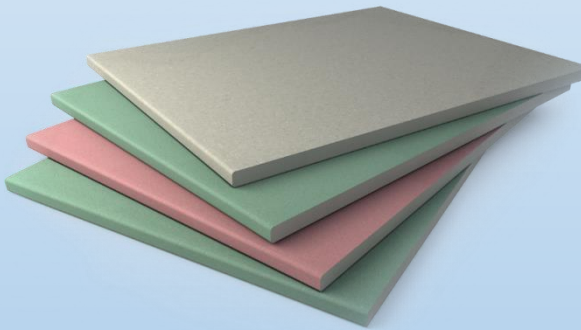


**GROUP OF COMPANIES "TON-M"**

The group of companies "TON-M" has been engaged in search, prospecting and exploration works for more than 25 years, and has been supplying construction materials, occupying one of the leading positions in this segment not only in the region, but also cooperating with enterprises throughout Russia.

---

**Delivery of building materials  
both foreign and domestic producers**



**Geological survey, prospecting and exploration of  
deposits for ore and placer gold, tin, tungsten, iron,  
gypsum, stone-colored raw materials and other  
minerals**



# Production base in Irkutsk

At the production base in Irkutsk is located:

- office administrative buildings;
- extensive storage facilities;
- crushing plant;
- a core storage and a rock storage facility;
- working classrooms of geologists and mineralogists;
- mineralogical laboratory;
- canteen.

In Irkutsk, the following are carried out by our own forces:

- design of geological exploration works;
- mineralogical and petrographic studies of sample samples;
- cameral and reporting and drafting work;
- accumulation and fragmentation of samples.

Workplaces of specialists are equipped with modern office equipment and corresponding software.



# Production base of Bodaibo

In addition to Irkutsk, the company has a production base in Bodaibo (located 950 km northeast of Irkutsk).

On its territory there are:

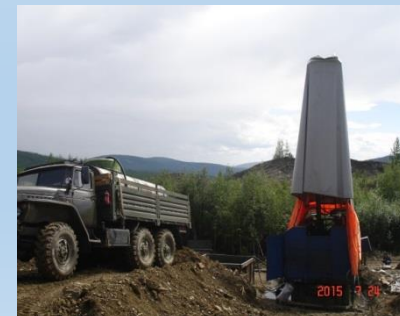
- Office administrative building;
- dormitory;
- canteen;
- parking boxes for vehicles and equipment repair;
- crushing plant;
- bath-and-laundry complex;
- a platform for winter storage of machinery;
- warehouses.



# Technical equipment

Technical means are concentrated on production bases in Irkutsk and Bodaibo. Both bases have the necessary storage facilities for storing materials and equipment, parking boxes for vehicles:

- bulldozers B-10 M;
- SHANTUI bulldozers;
- self-propelled drilling rigs SKB-4, SKB-5;
- drilling rig BTS - 150 on the basis of the tractor T-170;
- caterpillar conveyors MT LB;
- motor vehicles URAL, ZIL - 131;
- KAMAZ vehicles;
- a URAL tractor with a trawl - a heavyweight vehicle GAZ - 66 of a UAZ - 452 vehicle;
- power stations and gasoline units of various brands;
- logging complexes;
- Magnetometers;
- jaw crushers ДГШ 60/100;
- radio stations of different brands;
- satellite phones;
- GPS - navigators;
- computers;
- binoculars and microscop



An updated license for the  
right to use subsoil on the  
Kamchadal IRK 03225 TR



Департамент по недропользованию по Центрально-Сибирскому округу  
(наименование органа, выдавшего лицензию)

**ЛИЦЕНЗИЯ**  
**на пользование недрами**

серия **И Р К** номер **03225** вид лицензии **Т Р**

Выдана **Обществу с ограниченной ответственностью «Саянская горно-геологическая компания»**  
(полное наименование юридического лица)

в лице **Генерального директора Кардонова Виктора Георгиевича**  
(полное наименование должности лица, уполномоченного на подписание документа)

с целевым назначением и видами работ **геологическое изучение и добыча**  
официальн**а и только на участке «Камчадал»**

Участок недр расположен **на территории Черемховского района**  
**Иркутской области**  
(наименование населенного пункта, района, области, края, республики)

Описание границ участка недр, координаты угловых точек, копии  
топопланов, разрезов и др. приводятся в приложении **3,6**  
(№ прилож.)

Участок недр имеет статус **геологического и горного отводов**  
(геологического или горного отвода)

Дата окончания действия лицензии **август 2019г.**  
(число, месяц, год)

Место штампа  
государственной регистрации



# Ophyocalcite of the Kamchadal deposit



# Investments in the production of Ophiocalcite

Decorative ophicalcite possesses high artistic and decorative qualities, it can be used as a raw material of 1 grade for manufacturing:

- highly decorative artistic products;
- interior decoration of buildings;
- facing of stairs, floors and other building structures.



# Talc of the Kamchadal deposit

Talc of the Kamchadal deposit meets the specifications for both lump and ground talc, belongs to the following brands:

T-90 (extra) and T-91 (1st grade),  
suitable for production:

- rubber products;
- plastics;
- varnish-and-paint products;
- cable products;
- in medicine;
- perfume industry,

It can practically be used in all industries that use talc.



# Implementation of the talcum mining project

## Stage 1:

The organization of extraction and grinding of talc.

The final product is ground talc of different fractions.

Use of ground talc:

- Production of automobile tires, ceramic products, welding electrodes, etc. - Talc of coarse grinding (up to 45 microns) is used;
- Manufacture of paint and varnish materials - a microtalc of fine grinding (20 microns) is used;
- Pulp and paper mills - used dispersed talc (45-20 microns);
- High-tech industries - astronautics, radio electronics, marine shipbuilding, rocket technology - use ultra-thin (less than 5 microns) supermicrotalks of high whiteness.



# Implementation of the talcum mining project

## Stage 2:

Organization of the Baikal talc combine.

The final product is the production of cosmetics and medical products.

The organization of the production of a complete cycle from the extraction and grinding of talc to the release of finished products.



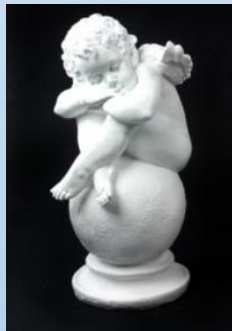
# Participation in TOP (the territory of advanced development) in Usolye-Sibirskoe

## Benefits for residents TOP:

- Mineral extraction tax: 0% for four years, with a gradual increase to 100%.
- Income tax: no more than 5% for the first five years, no less than 10% for the next 5 years.
- Property tax, land tax: may be provided for exemption.
- Social contributions: 7.6% over 10 years.
- Use of free customs zone.
- Preferential mode of connection to various infrastructure objects.
- The possibility of attracting in a preferential and expedited procedure foreign qualified personnel.
- Use of sanitary and technical regulations following the example of the most developed OECD countries.
- A special order of land use.
- Preferential rates for rent.
- A special procedure for conducting state control and municipal supervision.
- Provision of special public services

# Completed projects

Our company discovered a deposit of gypsum in the Nukutsk region, where a plant for the production of drywall and construction mixtures of the international company Knauf was built.



Three gold deposits in the Bodaibo District were discovered and transferred to the region's mining industry



Таким образом, нами в регион были привлечены крупные зарубежные и отечественные инвесторы!

## Implemented projects in cooperation with other enterprises:

1. The gold deposit of Aroeiskoye was discovered (reserves were protected and the feasibility study was compiled) and estimated resources were estimated by categories P1 and P2 (corresponding to the average scale in the field);
2. Gold ore zones have been identified at the Svetlovsky ore field, predictive resources have been estimated for categories P1 and P2 (corresponding to a large scale deposit);
3. The industrial significance was proved and predicted resources for categories P1 and P2 of Verkhne-Ugakhan ore development of gold (corresponding to the average scale in the field) were estimated;
4. The ore occurrence of gold is widely recognized, its forecast resources for P1 category are estimated (they correspond to the medium-scale deposit);
5. The industrial significance of the Marininsk ore deposit of tungsten (corresponding to the forecasted resources of a large deposit) is proved;
6. The industrial significance of the Dogaldinsky ore deposit of tungsten is proved (it corresponds to the forecasted resources of the middle field);
7. The forecasted resources of iron ore of the Tonodskaya area in the Mamsko-Chui rayon of the Irkutsk region were identified and evaluated. The work was carried out jointly with FSUE "VIMS". According to the assessment of the Federal Agency for Subsoil Use, this field, by its size, is classified as "Unique" (P1 - 583, P2 - 4,900 million tons) and is one of the most important discoveries of 2015.

## Planned projects

At present, most of the gold mining enterprises in Siberia are experiencing difficulties with the availability of reserves of ore and placer gold. The growth of these reserves is not possible without carrying out the entire complex of prospecting and exploration works.

GC "TON-M" performs such work since 1992. Geologists of our company have real opportunities and experience to carry out the whole range of geological works. We have successful experience of implemented joint projects with other enterprises.

To date, there are a number of projects that we would like to implement together with interested partners in the future.

**THANK YOU FOR ATTENTION!**