



# Projects of Russian-Japanese cooperation



- **Sakhalin-1** is developed by Exxon Mobil (USA), Rosneft, Sodeco (Japan) and ONGC Videsh Ltd. (India). Produced oil is exported, in particular to Japan and Korea.
- **Sakhalin-2** is developed by Gazprom, Shell (UK/ Netherland) as well as Mitsui and Mitsubishi (Japan): oil/gas production, gas liquefaction at the Russia's first LNG plant (start-up in 2009) and oil/gas export to Asian-Pacific countries (the majority of which to Japan).
- **Since 2010 the Joint Implementation Project** (in acc. with the Kyoto Protocol ) **concerning APG recovery** has been carried out by Gazpromneft, Mitsubishi Corporation and Nippon Oil & Energy Corporation at Yety-Purovskoye field (YNAO).
- **In 2011** Gazprom and Japan's Agency of Natural Resources and Energy signed the agreement concerning cooperation in preparing a feasibility study on the options for natural gas use in Vladivostok area.
- **In 2011** Gazprom and Japan Far East Gas Co signed the agreement regarding a joint feasibility study for Vladivostok project (LNG plant).
- **2013** – Investment stage of project.

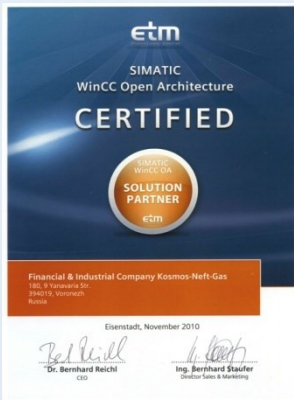




# Financial & Industrial Company **KOSMOS-NEFT-GAS**

GAZPROM's authorized supplier and partner for infrastructure development projects at oil & gas fields in the Far North, the Siberia and the south of Russia

Certified partner in  
**WinCC OA** solutions



# Comprehensive designing of different industrial facilities:



- **CJSC Sibur-Khimprom:**  
Upgrading of styrene production facility to increase its capacity and use new vacuum dehydrogenation technology.  
Ethylbenzene production.
- **LLC Novy Urengoy Gas Chemicals Complex:**  
LPG storage, flare facilities and loading/unloading terminal.
- **JSC Kauchuk:**  
Isobutylene dimer production.
- **JSC Plastic:**  
Upgrading of styrene production facility to increase its capacity.
- **JSC Voronezhsintezkauchuk :**  
Butadiene storage.

# Main categories of produced equipment

- **Pipeline valve components**
- **Christmas trees**
- **Wellhead control panels**
- **Burner units and flare systems**
- **Gas and air heaters**
- **Pumping equipment**
- **Tanks, vessels and columns**
- **Automated process control systems**

# Compiling of complete cycle diagrams for natural gas production, transportation and processing



**Field**



**Preparation for transportation**

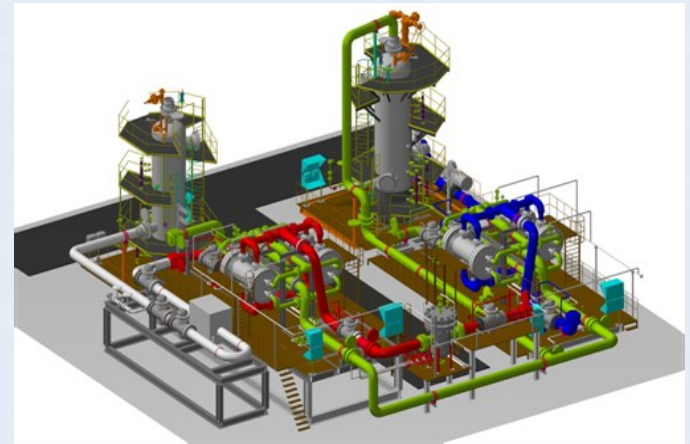
**Processing**



# Development of skid-mounted modular packages

**Development, delivery, start-up  
of ready-to-operate gas  
processing skids**

- ❖ **Engineering**
- ❖ **Construction**
- ❖ **Commissioning and start-up**



# Equipment and services proposed by FIC KOSMOS-NEFT-GAS for offshore field construction



## Proposed equipment and services

- **Engineering of process lines**
- **Flare systems and burner units**
- **Automated process control systems**
- **Lightning protection systems**
- **Wellhead control panels**
- **Skid-mounted modular systems for gas processing (separators, plate heat exchangers), sampling systems, pumping and valve units etc.**





**THANK YOU!**